

MARCH

14

BROADBAND DEPLOYMENT UPDATE



97.8%

of New Zealanders will have access to faster broadband by end 2019

UFB

31% of New Zealanders in UFB areas have access, and over 27,000 users are now connected to UFB

→ see page 2

Rural Broadband Initiative (RBI)

Over half of the planned 154 new towers have been installed

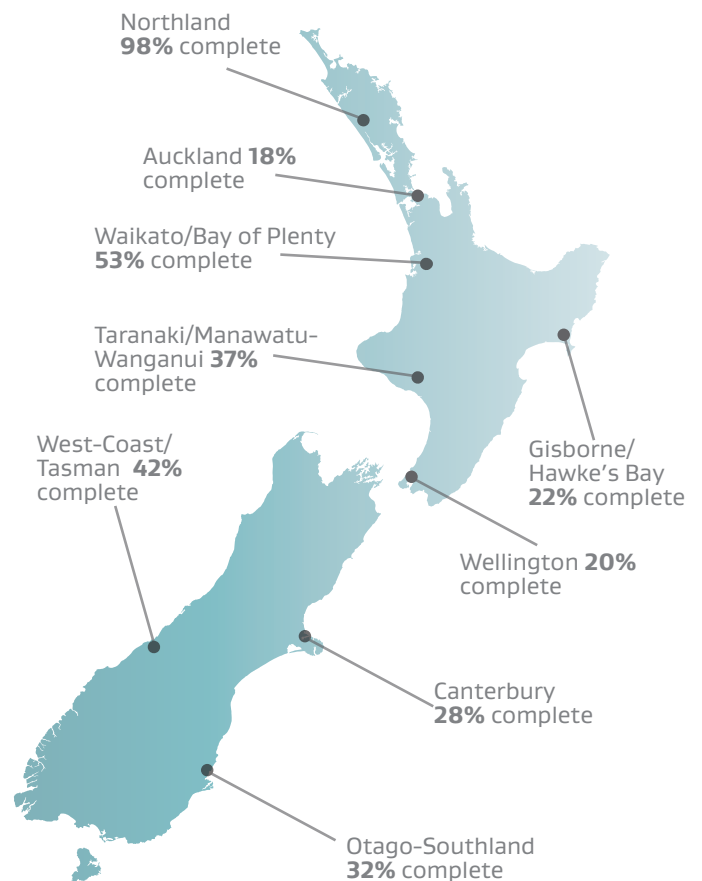
→ see page 3

Priority Users

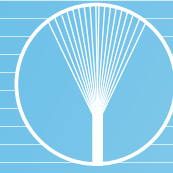
Over 86% of the programme target for schools to be ready for service has been reached

→ see page 5

UFB DEPLOYMENT PROGRESS:



ULTRA-FAST BROADBAND INITIATIVE (UFB)



Connecting 75% of New Zealanders with fibre to the premise by end 2019. Fibre will be capable of peak speeds of at least 100Mbps.

Highlights

- › 67 retail providers are actively offering UFB services.
- › UFB connections are now available in 28 candidate areas. For information on whether you can connect to UFB, please contact your retail service provider or go to www.broadband.govt.nz

TABLE 1: UFB Progress at March Quarter 2014

	End users able to connect	Connected users
Added this quarter	57,755	7,452
Total to date	420,864	27,367

FIGURE 1A: UFB end users able to connect

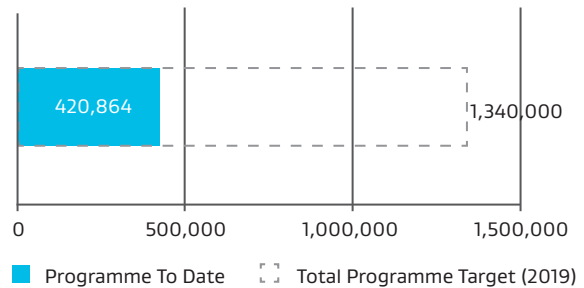
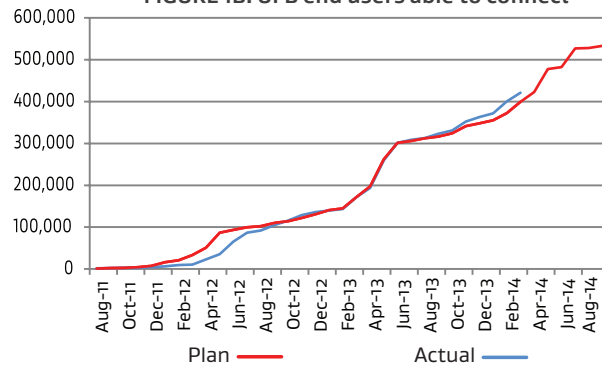


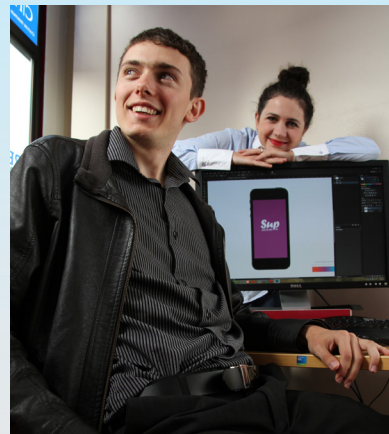
FIGURE 1B: UFB end users able to connect



→ UFB

Local company Northpower successfully completed the UFB build in Whangarei in May, the first city in New Zealand to be fully fibred. The new infrastructure will provide a platform for future growth, development and innovation in the city and the wider region.

Daniel Beazley and Rosie Riggir of CHART North in Whangarei - using fibre for their new SUP App.



RURAL BROADBAND INITIATIVE (RBI)



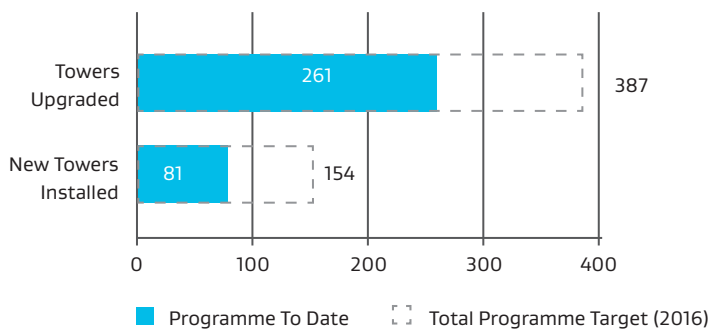
Connecting 86% of rural homes and businesses (outside UFB areas) with broadband at peak speeds of at least 5Mbps by 2016. This is through fixed wireless and improved copper services (some rural homes and businesses will be able to choose between the two services).

VODAFONE's role is the provision of fixed wireless broadband capable of peak speeds of at least 5Mbps.

TABLE 2: Vodafone Progress at March Quarter 2014

	Towers Upgraded	New Towers Installed	Households Covered (Approximate)
Added This Quarter	11	5	7,840
Total to Date	261	81	187,000

FIGURE 2: Vodafone RBI

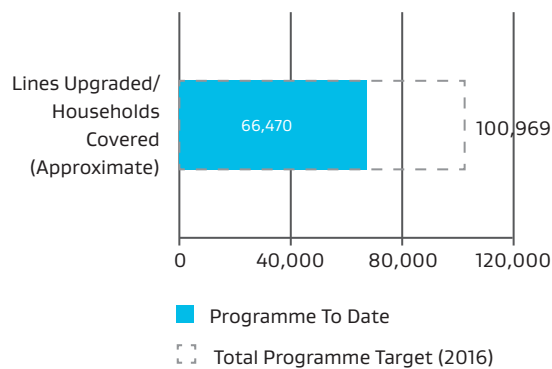


CHORUS' role is the deployment of fibre to cabinets, offering improved broadband services. Some residences will receive copper-based broadband speeds of up to 20Mbps.

TABLE 3: Chorus Progress at March Quarter 2014

	Lines Upgraded/ Households Covered (Approximate)
Added this Quarter	6,240
Total to Date	66,470

FIGURE 3: Chorus RBI





→ RBI

Ten rural schools in remote locations around Gisborne and Wairoa now have faster broadband, as part of the RBI. The point-to-point wireless broadband is capable of peak speeds of at least 10 Mbps. Successfully installed by local communications company Gisborne Net, the new infrastructure means local communities can also access faster broadband.



Hikurangi Spur equipment was upgraded



To be connected with fibre capable of peak speeds of at least 100Mbps through the UFB or RBI. Remote schools will receive point-to-point wireless connections capable of peak speeds of at least 10Mbps.

TABLES 4A & 4B: Schools Progress at March Quarter 2014

Added this Quarter	Schools with fibre past the school gate	Schools ready for service	Total to date	Schools with fibre past the school gate	Schools ready for service
UFB	19	22	UFB	1,301	1,218
RBI	44	43	RBI	880	875
Remote schools	n/a	1	Remote schools	n/a	40

Note: The programme target covers state and state-integrated schools. It includes schools that have been connected to fibre outside of the UFB and RBI.

FIGURE 4: Total UFB, RBI and Remote Schools ready for service

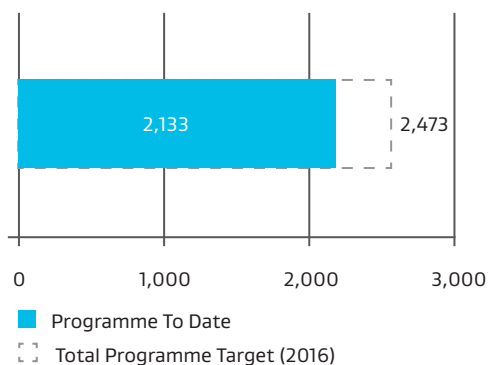
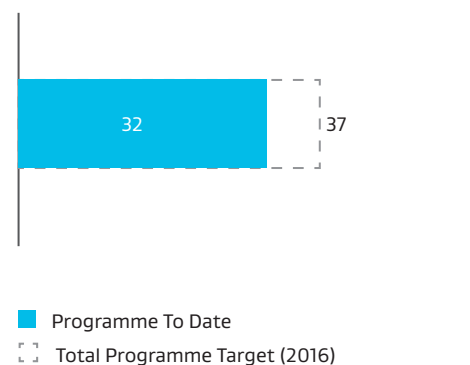


FIGURE 5: Total rural hospitals ready for service



→ PRIORITY USERS

A new website set up to help local businesses unlock the potential of the Internet is proving popular. Since its launch in April, www.digitaljourney.co.nz has already been used by more than 300 businesses to complete an online assessment and prepare a personal action plan. Using the new site makes it easy to see how digital technologies can be used to benefit businesses.



www.digitaljourney.co.nz

■ Website

The quarterly broadband update is available in pdf format through the Ministry's Economic Development website:

<http://www.med.govt.nz/sectors-industries/technology-communication/fast-broadband/deployment-progress>

■ Data Sources

The broadband deployment update is compiled with information from Crown Fibre Holdings and the various companies mentioned in this update. This update covers the March quarter (1 January–31 March) 2014.

■ Next Release

The next quarterly broadband update is scheduled for release August 2014.

Please forward any enquiries to:

Communications and IT Policy

Resources, Energy and Communications Branch

Ministry of Business, Innovation and Employment

P O Box 1473, Wellington, New Zealand

Telephone: +64 4 472 0030

Email: broadband@mbie.govt.nz



**MINISTRY OF BUSINESS,
INNOVATION & EMPLOYMENT**
HĪKINA WHAKATUTUKI

New Zealand Government